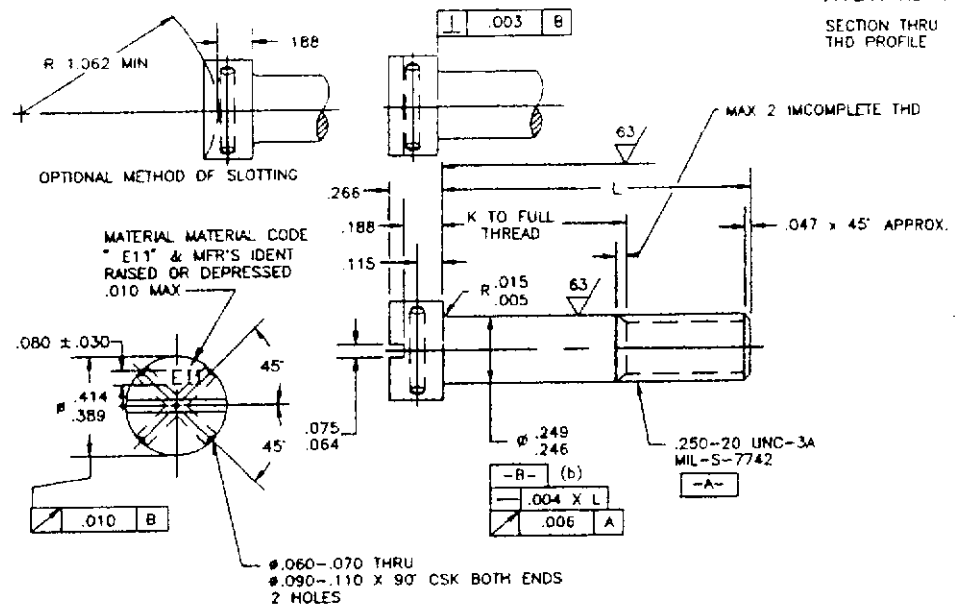
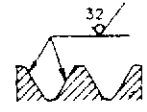


FED SUP CLASS
5305



REVERSE SYMBOLS

NOTICE: When Government drawings, specifications or other data are used for any purpose other than in connection with a definitely related Government procurement operation, the United States Government thereby incurs no responsibility, and no authority is hereby implied or assumed, in any way connected with the use of drawings, specifications, or other data. It is the responsibility of any person or organization using any such data to contact the holder of any patent rights or other intellectual property rights which may be involved to obtain the necessary permission to manufacture, use, or sell any patented invention that may in any way be related thereto.

APPROVED FOR PUBLIC RELEASE; DISTRIBUTION IS LIMITED.
This drawing is the property of the Air Force and Navy Departments. It is to be controlled and its reproduction or transmission in any form is prohibited without the written approval of the Department of Defense. This drawing is to be controlled and its reproduction or transmission in any form is prohibited without the written approval of the Department of Defense. This drawing is to be controlled and its reproduction or transmission in any form is prohibited without the written approval of the Department of Defense.

PART NO.	L	K	PART NO.	L	K	PART NO.	L	K
AN115855	.375	(a)	AN115867	1.125	.375	AN115879	2.000	1.250
AN115856	.438	(a)	AN115868	1.188	.438	AN115880	2.125	1.375
AN115857	.500	(a)	AN115869	1.250	.500	AN115881	2.250	1.500
AN115858	.562	(a)	AN115870	1.312	.562	AN115882	2.375	1.625
AN115859	.625	(a)	AN115871	1.375	.625	AN115883	2.500	1.750
AN115860	.688	(a)	AN115872	1.438	.688	AN115884	2.625	1.875
AN115861	.750	(a)	AN115873	1.500	.750	AN115885	2.750	2.000
AN115862	.812	(a)	AN115874	1.562	.812	AN115886	2.875	2.125
AN115863	.875	.125	AN115875	1.625	.875	AN115887	3.000	2.250
AN115864	.938	.188	AN115876	1.688	.938			
AN115865	1.000	.250	AN115877	1.750	1.000			
AN115866	1.062	.312	AN115878	1.875	1.125			

(a) THREAD TO HEAD IN ACCORDANCE WITH AS3062.
(b) FOR AN115855 THRU AN115865, DATUM A SHALL REPLACE DATUM B.

INCH-POUND

ENTIRE STANDARD REVISED

THIS STANDARD WAS DEVELOPED COOPERATIVELY WITH THE ENGINE AND PROPELLER STANDARDS PARTS COMMITTEE OF THE SAE.

P.A. DLA-15	AIR FORCE - NAVY AERONAUTICAL STANDARD	AN115851 THRU AN115900
Other Cust AS, AV, 11	SCREW - FLAT FILLISTER, DRILLED HEAD, .250-20	
PROCUREMENT SPECIFICATION	SUPERSEDES	SHEET 1 OF 2

PREVIOUS EDITIONS OF THIS FORM ARE OBSOLETE

PROJECT NO. 5305-2041

APPROVED 6 JUNE 1949 REVISED 1 4 OCT 1954 2 03 JUNE 1986 3 21 OCT 1984

REVIEWER SYMBOLS

NOTICE: When Government drawings, specifications or other data are used for any purpose other than in connection with a definite government contract, the Government assumes no responsibility, nor any obligation whatsoever, and the fact that the Government may have furnished, furnished, or in any way supplied the said drawings, specifications, or any other data is not to be regarded by implication or otherwise as in any manner licensing the holder or any other person or corporation, or conveying any rights or permission to manufacture, use, or sell any patented invention that may in any way be related thereto.

DISSEMINATION STATEMENT: APPROVED FOR PUBLIC RELEASE; DISTRIBUTION IS LIMITED.
 NOTE: This drawing was prepared by joint action of the Air Force and Navy Component at the AF/Naval Air Station, Orlando, Florida. This drawing represents all dimensions shown drawings for the same product and shall become effective for the presentation of aerodynamic shapes, or for use in any design not later than 6 months after the release date of approval sheet.
 AMSC: N/A

REQUIREMENTS:

1. MATERIAL: STEEL AMS 6322 (UNS G87400). MATERIAL CODE PER AS269.
2. HARDNESS: 26-32 HRC.
3. INSPECTION: MAGNETIC PARTICLE INSPECTION PER AMS 2640. ACCEPTANCE CRITERIA PER AS7452.
4. FINISH: CADMIUM PLATE PER AMS 2400.
5. SURFACE TEXTURE: SYMBOLS PER ANSI Y14.36. REQUIREMENTS PER ANSI/ASME B46.1. UNLESS OTHERWISE SPECIFIED, SURFACES TO BE 125 MICROINCHES Ra.
6. EDGES: BREAK EDGES .003-.015 UNLESS OTHERWISE SPECIFIED.
7. DIMENSIONING AND TOLERANCING: ANSI Y14.5M.
8. TOLERANCES: UNLESS OTHERWISE SPECIFIED, LINEAR DIMENSIONS $\pm .010$. ANGULAR DIMENSIONS $\pm 2'$.
9. PROCUREMENT SPECIFICATION: AS7452.

NOTES:

1. DIMENSIONS IN INCHES.
2. DO NOT USE UNASSIGNED PART NUMBERS.
3. IN THE EVENT OF A CONFLICT BETWEEN THE TEXT OF THIS DOCUMENT AND THE REFERENCES CITED HEREIN, THE TEXT OF THIS DOCUMENT SHALL TAKE PRECEDENCE.
4. UNLESS OTHERWISE SPECIFIED, ISSUES OF REFERENCED DOCUMENTS ARE THOSE IN EFFECT AT THE TIME OF SOLICITATION.

③ ENTIRE STANDARD REVISED

THIS STANDARD WAS DEVELOPED COOPERATIVELY WITH THE ENGINE AND PROPELLER STANDARDS PARTS COMMITTEE OF THE SAE.

P.A. DLA-15	AIR FORCE - NAVY AERONAUTICAL STANDARD	AN115851 THRU AN115900
Other Cust AS, AV, 11	SCREW - FLAT FILLISTER, DRILLED HEAD, .250-20	
PROCUREMENT SPECIFICATION	SUPERSEDES.	SHEET 2 OF 2

APPROVED 6 JUNE 1949 REVISED ① 4 OCT. 1954 ② 03 JUNE 1986 ③ 21 OCT 1994