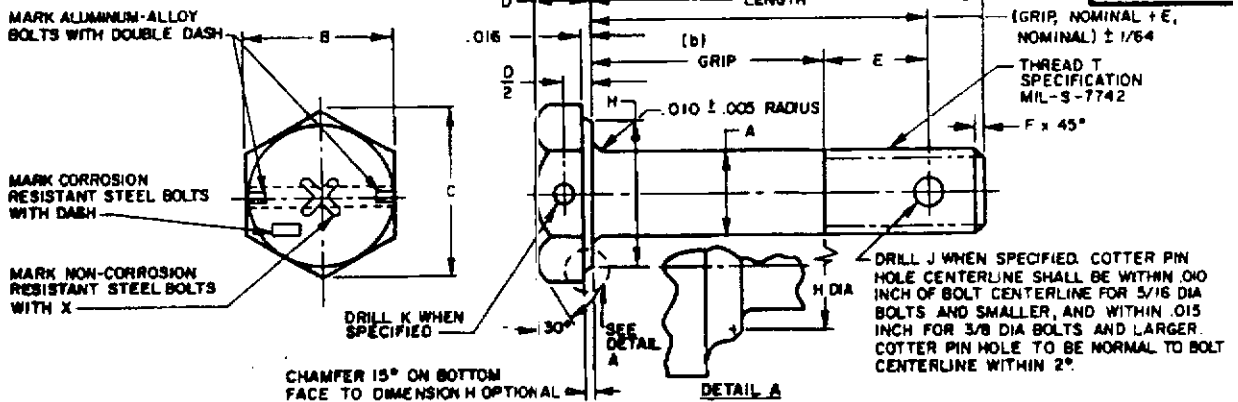


THE REQUIREMENTS FOR ACQUIRING THE PRODUCT(S) DESCRIBED HEREIN SHALL CONSIST OF THIS SPECIFICATION SHEET AND THE ISSUE OF THE FOLLOWING SPECIFICATION LISTED IN THAT ISSUE OF THE DODISS SPECIFIED IN THE SOLICITATION: MIL - B - 682



BASIC AN PART NO.	THREAD T	A DIA		B		C REF	D		E REF	F		H DIA	J DRILL +.010 - .000	K DRILL +.010 - .000
		MAX	MIN	MAX	MIN		MAX	MIN		MAX	MIN			
AN3	NO. 10-32 UNF-3A	.189	.186	.377	.365	.430	.141	.109	17/64	.047	.015	.335	.070	.046
AN4	1/4 -28 UNF-3A	.249	.246	.440	.428	.510	.172	.140	5/16	.047	.015	.398	.076	.046
AN5	5/16-24 UNF-3A	.312	.309	.502	.490	.580	.204	.172	23/64	.063	.031	.460	.076	.070
AN6	3/8 -24 UNF-3A	.374	.371	.565	.553	.650	.235	.203	7/16	.063	.031	.523	.106	.070
AN7	7/16-20 UNF-3A	.437	.433	.627	.615	.720	.266	.234	31/64	.063	.031	.585	.106	.070
AN8	1/2 -20 UNF-3A	.499	.495	.752	.740	.870	.297	.265	39/64	.063	.031	.710	.106	.070
AN9	9/16-18 UNF-3A	.562	.558	.877	.865	1.010	.328	.295	21/32	.078	.046	.835	.141	.070
AN10	5/8 -18 UNF-3A	.624	.620	.940	.928	1.090	.360	.328	47/64	.078	.046	.898	.141	.070
AN12	3/4 -16 UNF-3A	.749	.744	1.066	1.053	1.230	.422	.390	7/8	.078	.046	1.023	.141	.070
AN14	7/8 -14 UNF-3A	.874	.869	1.253	1.240	1.440	.485	.453	63/64	.094	.062	1.210	.141	.070
AN17	1 -12 UNF-3A	.999	.993	1.441	1.428	1.660	.547	.515	1-3/32	.094	.062	1.398	.141	.070
AN18	1-1/8 -12 UNF-3A	1.124	1.118	1.628	1.615	1.880	.610	.578	1-3/16	.110	.078	1.585	.141	.070
AN20	1-1/4 -12 UNF-3A	1.249	1.243	1.815	1.802	2.090	.672	.640	1-3/8	.110	.078	1.772	.141	.070

SEE SHEET 3 FOR NOTES (a) AND (b).

(c) THE DIAMETER OF THE WASHER FACE SHALL NOT EXCEED THE ACTUAL WIDTH ACROSS FLATS.

(d) 1-14NF THREAD PITCH INACTIVE FOR DESIGN AFTER 15 JUNE 1966.

MATERIAL: NON-CORROSION RESISTANT STEEL, CORROSION-RESISTANT STEEL OR ALUMINUM ALLOY. SEE PROCUREMENT SPECIFICATION.

FINISH: SEE PROCUREMENT SPECIFICATION.

ADD "C" BEFORE DASH NUMBER FOR CORROSION-RESISTANT STEEL BOLT.

ADD "D" BEFORE DASH NUMBER FOR ALUMINUM ALLOY BOLT.

ADD "A" AFTER DASH NUMBER FOR UNDRILLED BOLT. SEE ILLUSTRATION.

ADD "H" BEFORE DASH NUMBER FOR BOLT WITH DRILLED HEAD AND SHANK. SEE ILLUSTRATION.

ADD "H" BEFORE DASH NUMBER AND "A" AFTER DASH NUMBER FOR BOLT WITH DRILLED HEAD ONLY. SEE ILLUSTRATION.

EXAMPLES OF PART NUMBERS:

- AN6-10 = 3/8 NON-CORROSION RESISTANT STEEL BOLT 1-5/64 LONG, 7/16 GRIP WITH DRILLED SHANK ONLY. SEE ILLUSTRATION.
- AN6C10 = 3/8 CORROSION-RESISTANT STEEL BOLT 1-5/64 LONG, 7/16 GRIP WITH DRILLED SHANK ONLY. SEE ILLUSTRATION.
- AN6DD10 = 3/8 ALUMINUM ALLOY BOLT 1-5/64 LONG, 7/16 GRIP WITH DRILLED SHANK ONLY. SEE ILLUSTRATION.
- AN6DD10A = 3/8 ALUMINUM ALLOY BOLT 1-5/64 LONG, 7/16 GRIP, UNDRILLED SHANK AND HEAD. SEE ILLUSTRATION.
- AN6DDH10 = 3/8 ALUMINUM ALLOY BOLT 1-5/64 LONG, 7/16 GRIP WITH DRILLED HEAD AND SHANK. SEE ILLUSTRATION.
- AN6DDH10A = 3/8 ALUMINUM ALLOY BOLT 1-5/64 LONG, 7/16 GRIP WITH DRILLED HEAD ONLY. SEE ILLUSTRATION.

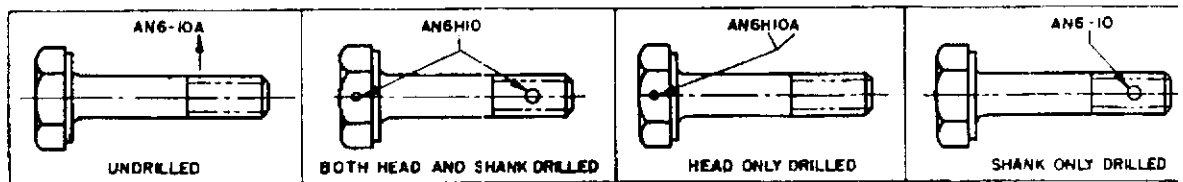


ILLUSTRATION OF DRILLED AND UNDRILLED BOLTS AND PART NUMBERS

BOLTS SHALL BE FREE FROM ALL HANGING BURRS AND SLIVERS WHICH MIGHT BECOME DISLODGED UNDER USAGE. COUNTERSINKING OF DRILLED HOLES IN HEAD IS MANDATORY. COUNTERSINKING OF DRILLED HOLES IN SHANK IS OPTIONAL.

DIMENSIONS ARE IN INCHES. UNLESS OTHERWISE SPECIFIED, TOLERANCES: DECIMALS ±.010, ANGLES ±5°.

① FOR CHANGES SEE SHEET 2

THIS SPECIFICATION IS APPROVED FOR USE BY ALL DEPARTMENTS AND AGENCIES OF THE DEPARTMENT OF DEFENSE

PREPARING ACTIVITY: NAVY-AS CUSTODIANS: ARMY-AV NAVY- AIR FORCE-99 OLA-	MILITARY SPECIFICATION SHEET TITLE BOLT - MACHINE, AIRCRAFT	SPECIFICATION SHEET NUMBER 26 FEB 1 AN3 THRU AN20 SUPERSEDING AN3 THRU AN20 28 MARCH 1969 AMSC- N/A FSC: 5306
---	---	--

SPECIFICATION SHEET AND THE ISSUE OF THE FOLLOWING SPECIFICATION LISTED IN
 DUE OF THE DODDIS SPECIFIED IN THE SOLICITATION: MIL-B-6812

DASH NO.	AN3		AN4		AN5		AN6		AN7		AN8		AN9	
	GRIP ±1/64	LENGTH +1/32 -1/64	GRIP ±1/64	LENGTH +1/32 -1/64	GRIP ±1/64	LENGTH +1/32 -1/64	GRIP ±1/64	LENGTH +1/32 -1/64	GRIP ±1/64	LENGTH +1/32 -1/64	GRIP ±1/64	LENGTH +1/32 -1/64	GRIP ±1/64	LENGTH +1/32 -1/64
3	1/16	15/32	1/16	15/32										
4	1/8	17/32	1/16	17/32	1/16	19/32								
5	1/4	21/32	3/16	21/32	3/16	23/32	1/16	45/64	1/16	23/32				
6	3/8	25/32	5/16	25/32	5/16	27/32	3/16	53/64	3/16	27/32	1/16	27/32	1/16	31/32
7	1/2	29/32	7/16	29/32	7/16	31/32	5/16	61/64	5/16	31/32	3/16	31/32	1/8	1- 1/32
10	5/8	1- 1/32	9/16	1- 1/32	9/16	1- 3/32	7/16	1- 5/64	7/16	1- 3/32	5/16	1- 3/32	1/4	1- 5/32
11	3/4	1- 5/32	11/16	1- 5/32	11/16	1- 7/32	9/16	1-13/64	9/16	1- 7/32	7/16	1- 7/32	3/8	1- 9/32
12	7/8	1- 9/32	13/16	1- 9/32	13/16	1-11/32	11/16	1-21/64	11/16	1-11/32	9/16	1-11/32	1/2	1-13/32
13	1	1-13/32	15/16	1-13/32	15/16	1-15/32	13/16	1-29/64	13/16	1-15/32	11/16	1-15/32	5/8	1-17/32
14	1-1/8	1-17/32	1- 1/16	1-17/32	1- 1/16	1-19/32	15/16	1-37/64	15/16	1-19/32	13/16	1-19/32	3/4	1-21/32
15	1-1/4	1-21/32	1- 3/16	1-21/32	1- 3/16	1-23/32	1- 1/16	1-45/64	1- 1/16	1-23/32	15/16	1-23/32	7/8	1-25/32
16	1-3/8	1-25/32	1- 5/16	1-25/32	1- 5/16	1-27/32	1- 3/16	1-53/64	1- 3/16	1-27/32	1-1/16	1-27/32	1	1-29/32
17	1-1/2	1-29/32	1- 7/16	1-29/32	1- 7/16	1-31/32	1- 5/16	1-61/64	1- 5/16	1-31/32	1-3/16	1-31/32	1-1/8	2- 1/32
20	1-5/8	2- 1/32	1- 9/16	2- 1/32	1- 9/16	2- 3/32	1- 7/16	2- 5/64	1- 7/16	2- 3/32	1-5/16	2- 3/32	1-1/4	2- 5/32
21	1-3/4	2- 5/32	1-11/16	2- 5/32	1-11/16	2- 7/32	1- 9/16	2-13/64	1- 9/16	2- 7/32	1-7/16	2- 7/32	1-3/8	2- 9/32
22	1-7/8	2- 9/32	1-13/16	2- 9/32	1-13/16	2-11/32	1-11/16	2-21/64	1-11/16	2-11/32	1-9/16	2-11/32	1-1/2	2-13/32
23	2	2-13/32	1-15/16	2-13/32	1-15/16	2-15/32	1-13/16	2-29/64	1-13/16	2-15/32	1-1/16	2-15/32	1-5/8	2-17/32
24	2-1/8	2-17/32	2- 1/16	2-17/32	2- 1/16	2-19/32	1-15/16	2-37/64	1-15/16	2-19/32	1-3/16	2-19/32	1-3/4	2-21/32
25	2-1/4	2-21/32	2- 3/16	2-21/32	2- 3/16	2-23/32	2- 1/16	2-45/64	2- 1/16	2-23/32	1-5/16	2-23/32	1-7/8	2-25/32
26	2-3/8	2-25/32	2- 5/16	2-25/32	2- 5/16	2-27/32	2- 3/16	2-53/64	2- 3/16	2-27/32	2- 1/16	2-27/32	2	2-29/32
27	2-1/2	2-29/32	2- 7/16	2-29/32	2- 7/16	2-31/32	2- 5/16	2-61/64	2- 5/16	2-31/32	2-3/16	2-31/32	2-1/8	3- 1/32
30	2-5/8	3- 1/32	2- 9/16	3- 1/32	2- 9/16	3- 3/32	2- 7/16	3- 5/64	2- 7/16	3- 3/32	2-5/16	3- 3/32	2-1/4	3- 5/32
31	2-3/4	3- 5/32	2-11/16	3- 5/32	2-11/16	3- 7/32	2- 9/16	3-13/64	2- 9/16	3- 7/32	2-7/16	3- 7/32	2-3/8	3- 9/32
32	2-7/8	3- 9/32	2-13/16	3- 9/32	2-13/16	3-11/32	2-11/16	3-21/64	2-11/16	3-11/32	2-9/16	3-11/32	2-1/2	3-13/32
33	3	3-13/32	2-15/16	3-13/32	2-15/16	3-15/32	2-13/16	3-29/64	2-13/16	3-15/32	2-1/16	3-15/32	2-5/8	3-17/32
34	3-1/8	3-17/32	3- 1/16	3-17/32	3- 1/16	3-19/32	2-15/16	3-37/64	2-15/16	3-19/32	2-3/16	3-19/32	2-3/4	3-21/32
35	3-1/4	3-21/32	3- 3/16	3-21/32	3- 3/16	3-23/32	3- 1/16	3-45/64	3- 1/16	3-23/32	2-5/16	3-23/32	2-7/8	3-25/32
36	3-3/8	3-25/32	3- 5/16	3-25/32	3- 5/16	3-27/32	3- 3/16	3-53/64	3- 3/16	3-27/32	3-1/16	3-27/32	3	3-29/32
37	3-1/2	3-29/32	3- 7/16	3-29/32	3- 7/16	3-31/32	3- 5/16	3-61/64	3- 5/16	3-31/32	3-3/16	3-31/32	3-1/8	4- 1/32
40	3-5/8	4- 1/32	3- 9/16	4- 1/32	3- 9/16	4- 3/32	3- 7/16	4- 5/64	3- 7/16	4- 3/32	3-5/16	4- 3/32	3-1/4	4- 5/32
41	3-3/4	4- 5/32	3-11/16	4- 5/32	3-11/16	4- 7/32	3- 9/16	4-13/64	3- 9/16	4- 7/32	3-7/16	4- 7/32	3-3/8	4- 9/32
42	3-7/8	4- 9/32	3-13/16	4- 9/32	3-13/16	4-11/32	3-11/16	4-21/64	3-11/16	4-11/32	3-9/16	4-11/32	3-1/2	4-13/32
43	4	4-13/32	3-15/16	4-13/32	3-15/16	4-15/32	3-13/16	4-29/64	3-13/16	4-15/32	3-1/16	4-15/32	3-5/8	4-17/32
44	4-1/8	4-17/32	4- 1/16	4-17/32	4- 1/16	4-19/32	3-15/16	4-37/64	3-15/16	4-19/32	3-3/16	4-19/32	3-3/4	4-21/32

BY ALL DEPARTMENTS AND AGENCIES OF THE
 DEPARTMENT OF DEFENSE

DASH NO.	AN3		AN4		AN5		AN6		AN7		AN8		AN9	
	GRIP ±1/64	LENGTH +1/32 -1/64	GRIP ±1/64	LENGTH +1/32 -1/64	GRIP ±1/64	LENGTH +1/32 -1/64	GRIP ±1/64	LENGTH +1/32 -1/64	GRIP ±1/64	LENGTH +1/32 -1/64	GRIP ±1/64	LENGTH +1/32 -1/64	GRIP ±1/64	LENGTH +1/32 -1/64
50	4-5/8	5- 1/32	4- 9/16	5- 1/32	4- 9/16	5- 3/32	4- 7/16	5- 5/64	4- 7/16	5- 3/32	4-5/16	5- 3/32	4-1/2	5- 1/32
51	4-3/4	5- 5/32	4-11/16	5- 5/32	4-11/16	5- 7/32	4- 9/16	5-13/64	4- 9/16	5- 7/32	4-7/16	5- 7/32	4-3/8	5- 9/32
52	4-7/8	5- 9/32	4-13/16	5- 9/32	4-13/16	5-11/32	4-11/16	5-21/64	4-11/16	5-11/32	4-9/16	5-11/32	4-1/2	5-13/32
53	5	5-13/32	4-15/16	5-13/32	4-15/16	5-15/32	4-13/16	5-29/64	4-13/16	5-15/32	4-1/16	5-15/32	4-5/8	5-17/32
54	5-1/8	5-17/32	5- 1/16	5-17/32	5- 1/16	5-19/32	4-15/16	5-37/64	4-15/16	5-19/32	4-3/16	5-19/32	4-3/4	5-21/32
55	5-1/4	5-21/32	5- 3/16	5-21/32	5- 3/16	5-23/32	5- 1/16	5-45/64	5- 1/16	5-23/32	4-5/16	5-23/32	4-7/8	5-25/32
56	5-3/8	5-25/32	5- 5/16	5-25/32	5- 5/16	5-27/32	5- 3/16	5-53/64	5- 3/16	5-27/32	5-1/16	5-27/32	5	5-29/32
57	5-1/2	5-29/32	5- 7/16	5-29/32	5- 7/16	5-31/32	5- 5/16	5-61/64	5- 5/16	5-31/32	5-3/16	5-31/32	5-1/8	6- 1/32
60	5-5/8	6- 1/32	5- 9/16	6- 1/32	5- 9/16	6- 3/32	5- 7/16	6- 5/64	5- 7/16	6- 3/32	5-5/16	6- 3/32	5-1/4	6- 5/32
61	5-3/4	6- 5/32	5-11/16	6- 5/32	5-11/16	6- 7/32	5- 9/16	6-13/64	5- 9/16	6- 7/32	5-7/16	6- 7/32	5-3/8	6- 9/32
62	5-7/8	6- 9/32	5-13/16	6- 9/32	5-13/16	6-11/32	5-11/16	6-21/64	5-11/16	6-11/32	5-9/16	6-11/32	5-1/2	6-13/32
63	6	6-13/32	5-15/16	6-13/32	5-15/16	6-15/32	5-13/16	6-29/64	5-13/16	6-15/32	5-1/16	6-15/32	5-5/8	6-17/32
64	6-1/8	6-17/32	6- 1/16	6-17/32	6- 1/16	6-19/32	5-15/16	6-37/64	5-15/16	6-19/32	5-3/16	6-19/32	5-3/4	6-21/32
65	6-1/4	6-21/32	6- 3/16	6-21/32	6- 3/16	6-23/32	6- 1/16	6-45/64	6- 1/16	6-23/32	5-5/16	6-23/32	5-7/8	6-25/32
66	6-3/8	6-25/32	6- 5/16	6-25/32	6- 5/16	6-27/32	6- 3/16	6-53/64	6- 3/16	6-27/32	6-1/16	6-27/32	6	6-29/32
67	6-1/2	6-29/32	6- 7/16	6-29/32	6- 7/16	6-31/32	6- 5/16	6-61/64	6- 5/16	6-31/32	6-3/16	6-31/32	6-1/8	7- 1/32
70	6-5/8	7- 1/32	6- 9/16	7- 1/32	6- 9/16	7- 3/32	6- 7/16	7- 5/64	6- 7/16	7- 3/32	6-5/16	7- 3/32	6-1/4	7- 5/32
71	6-3/4	7- 5/32	6-11/16	7- 5/32	6-11/16	7- 7/32	6- 9/16	7-13/64	6- 9/16	7- 7/32	6-7/16	7- 7/32	6-3/8	7- 9/32
72	6-7/8	7- 9/32	6-13/16	7- 9/32	6-13/16	7-11/32	6-11/16	7-21/64	6-11/16	7-11/32	6-9/16	7-11/32	6-1/2	7-13/32
73	7	7-13/32	6-15/16	7-13/32	6-15/16	7-15/32	6-13/16	7-29/64	6-13/16	7-15/32	6-1/16	7-15/32	6-5/8	7-17/32
74	7-1/8	7-17/32	7- 1/16	7-17/32	7- 1/16	7-19/32	6-15/16	7-37/64	6-15/16	7-19/32	6-3/16	7-19/32	6-3/4	7-21/32
75	7-1/4	7-21/32	7- 3/16	7-21/32	7- 3/16	7-23/32	7- 1/16	7-45/64	7- 1/16	7-23/32	6-5/16	7-23/32	6-7/8	7-25/32
76	7-3/8	7-25/32	7- 5/16	7-25/32	7- 5/16	7-27/32	7- 3/16	7-53/64	7- 3/16	7-27/32	7-1/16	7-27/32	7	7-29/32
77	7-1/2	7-29/32	7- 7/16	7-29/32	7- 7/16	7-31/32	7- 5/16	7-61/64	7- 5/16	7-31/32	7-3/16	7-31/32	7-1/8	8- 1/32
80	7-5/8	8- 1/32	7- 9/16	8- 1/32	7- 9/16	8- 3/32	7- 7/16	8- 5/64	7- 7/16	8- 3/32	7-5/16	8- 3/32	7-1/4	8- 5/32
81						7-11/16	8- 7/32				7- 7/16	8- 7/32		
82											7- 7-9/16	8-11/32		
83											7- 7-1/16	8-15/32		
84											7- 7-3/16	8-19/32		
85											7- 7-5/16	8-23/32		
86											8- 8-1/16	8-27/32		
87											8- 8-3/16	8-31/32		

PREPARING ACTIVITY: NAVY - AS	MILITARY SPECIFICATION SHEET	SPECIFICATION SHEET NUMBER 26 FEB 90
CUSTODIANS: ARMY - AV NAVY -	TITLE	AN3 THRU AN20 (1)
AIR FORCE - 99 DLA	BOLT - MACHINE, AIRCRAFT	SUPERSEDING AN3 THRU AN20 28 MARCH 1989
REVIEW USER		AMSC - N/A FSC: 5306
PROJECT NUMBER 5396 1404		
DISTRIBUTION STATEMENT A Approved for public release. distribution is unlimited		Page 2 of 4