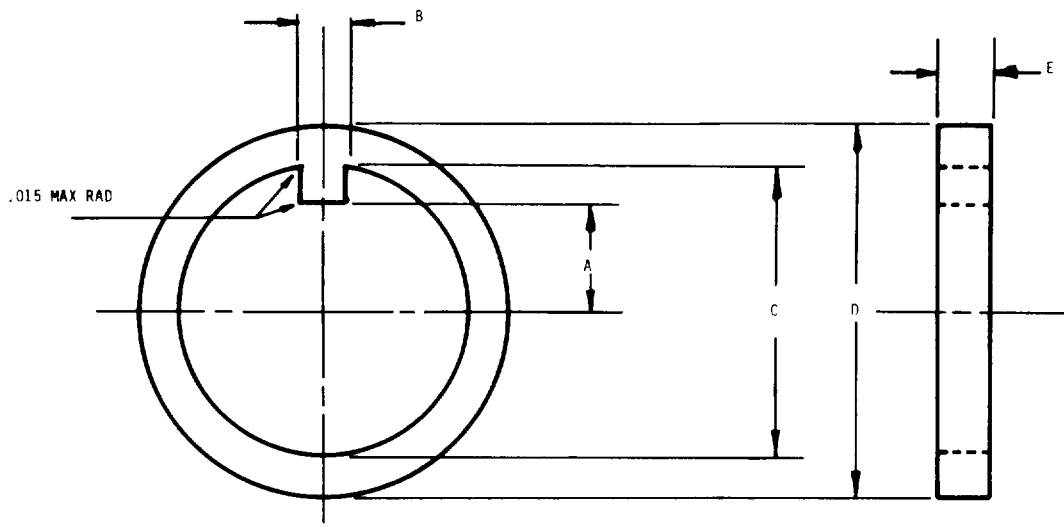


(A)



DASH NO.	A +.005	B +.010	C +.005 DIA.	D +.030 DIA.	E +.005
-15	.393	.125	.949	1.375	.093
-16	.424	.156	1.010	1.500	.125
-20	.546		1.260	1.750	
-23	.635		1.445	1.875	
-24	.670		1.515	2.250	
-28	.755	.219	1.760	2.375	.187
-31	.850		1.950	2.625	
-32	.880		2.010	3.062	
-39	1.105		2.450	3.688	
-47	1.307	.281	2.948	4.750	.187
-55	1.557		3.448	5.375	
-71	2.057		4.450		

(A)

MATERIAL: STEEL, ASTM A575, A663, A576, A675, A108, FS1018, 1020, OR 1025
 FINISH: CADMIUM PLATE, QQ-P-416, TYPE II, CLASS 3, OR ZINC PLATE ASTM B633, TYPE II CLASS SC3.
 REMOVE ALL BURRS.
 DIMENSIONS IN INCHES.
 ADD C IN PLACE OF DASH TO INDICATE CADMIUM PLATE.
 ADD Z IN PLACE OF DASH TO INDICATE ZINC PLATE.
 EXAMPLE OF PART NOS. MS21258C15 = WASHER, KEY, RETAINING, WHEEL BEARING, CADMIUM PLATED.
 MS21258Z15 = WASHER, KEY, RETAINING, WHEEL BEARING, ZINC PLATED.
 INTERCHANGEABILITY RELATION WITH AN7503 WASHERS: MS21258 WASHERS AND AN7503 WASHERS OF LIKE DASH NUMBERS ARE UNIVERSALLY,
 FUNCTIONALLY AND DIMENSIONALLY INTERCHANGEABLE.

THIS STANDARD TAKES PRECEDENCE OVER DOCUMENTS REFERENCED HEREIN.
 REFERENCED DOCUMENTS SHALL BE OF THE ISSUE IN EFFECT ON DATE OF INVITATIONS FOR BID.

APPROVED 7 APRIL 60 REVISED (A) 28 December 1984

P. A. AIR FORCE 82 Other Cust	INTERNATIONAL INTEREST	TITLE WASHER, KEY, RETAINING, WHEEL BEARING.	MILITARY STANDARD		
			MS 21258		
PROCUREMENT SPECIFICATION NONE	SUPERSEDES: AN7503	SHEET	1	OF	1