

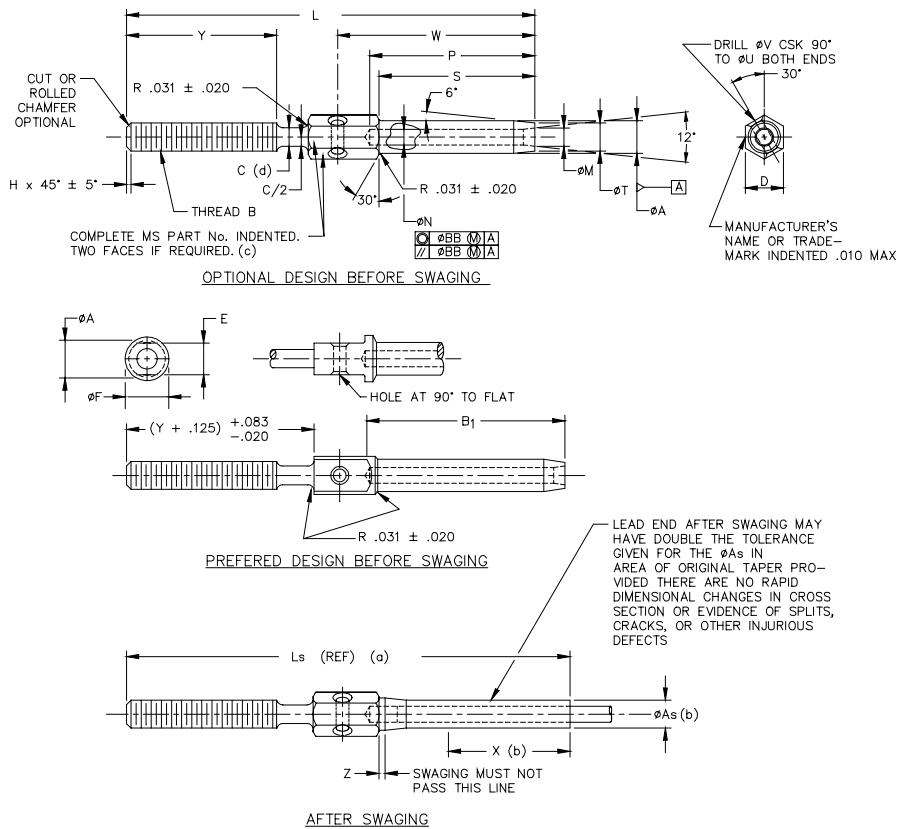
MS21259J
 5 November 2001
 SUPERSEDING
 MS21259H
 10 January 2001

DETAIL SPECIFICATION SHEET

TERMINAL, WIRE ROPE, SWAGING, STUD, LONG THREAD

This specification sheet is approved for use by all Departments and Agencies of the Department of Defense.

The requirements for acquiring the product described herein shall consist of this specification sheet and the issue of MIL-DTL-781 and QPL-781 listed in that issue of the Department of Defense Index of Specifications and Standards (DoDISS) specified in the solicitation.



- NOTES:
- (a) Reference dimensions are for design purposes only and are not an inspection requirement.
 - (b) Swaged terminals shall conform to ØAs for length X.
 - (c) For terminal sizes -2 through -5 use basic part number only, example: MS21259.
 - (d) Undercut (ØC) is optional for rolled threads only. The .031 ± .020 shall be required in any case.

FIGURE 1. Terminal, wire rope, swaging, stud, long thread.

TABLE I. Dash numbers and dimensions.

Dash number		Wire rope diameter		Minimum breaking strength lbs. 1/	Thread B UN-3A UNF-3A	ØA	ØAs	
RH thread	LH thread	Nominal	Minimum				+0.000 -0.005	+0.000 -0.007
-2RH	-2LH	1/16	.062	480	.1380 (# 6)-40	.160		
-3RH	-3LH	3/32	.093	920	.1900 (#10)-32	.218	.190	
-4RH	-4LH	1/8	.125	2,000	.2500 (1/4)-28	.250	.219	
-5RH	-5LH	5/32	.156	2,800		.297	.250	
-6RH	-6LH	3/16	.187	4,200	.3125 (5/16)-24	.359	.313	
-7RH	-7LH	7/32	.218	5,600	.3750 (3/8)-24	.427	.375	+0.000 -0.007
-8RH	-8LH	1/4	.250	7,000		.494	.438	
-9RH	-9LH	9/32	.281	8,000	.4375 (7/16)-20	.563	.500	+0.000 -0.005
-10RH	-10LH	5/16	.312	9,800	.5000 (1/2)-20	.635	.563	
-12RH	-12LH	3/8	.375	14,400	.5625 (9/16)-18	.703	.625	
-14RH	-14LH	7/16	.437	17,600	.6250 (5/8)-18	.781	.688	
-16RH	-16LH	1/2	.500	22,800		.844	.750	
-18RH	-18LH	9/16	.562	28,500	.7500 (3/4)-16	.984	.875	+0.000 -0.009
-20RH	-20LH	5/8	.625	35,000	.8750 (7/8)-14	1.109	1.000	+0.000 -0.010
-24RH	-24LH	3/4	.750	49,600	1.0000 (1)-12	1.359	1.250	+0.000 -0.010
-28RH	-28LH	7/8	.875	66,500	1.1250 (1 1/8)-12	1.593	1.437	
-32RH	-32LH	1	1.000	85,400	1.2500 (1 1/4)-12	1.812	1.625	

1/ To achieve the minimum breaking strength, for the terminal test only, a galvanized carbon steel wire rope shall be used.

TABLE I. Dash numbers and dimensions - Continued.

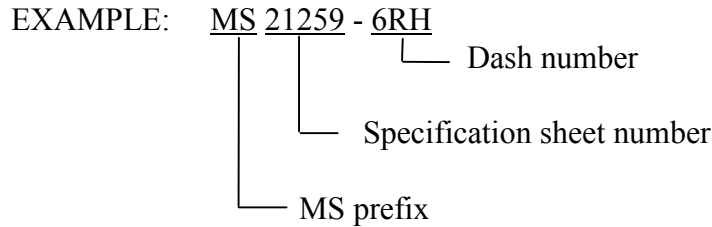
Dash number		B ₁ ±.063	ØC		D	E +0.000 -0.010
RH thread	LH thread		+0.024 -0.005	+0.028 -0.005		
-2RH	-2LH	1.042			.121	
-3RH	-3LH	1.261	.169		.250	.187
-4RH	-4LH	1.511	.226		.313	.250
-5RH	-5LH	1.761				
-6RH	-6LH	2.011	.285	+0.028 -0.005	.375	.312
-7RH	-7LH	2.261	.347		.438	.375
-8RH	-8LH	2.511		+0.033 -0.005	.500	.438
-9RH	-9LH	2.761	.405		.625	.563
-10RH	-10LH	3.011	.467		.688	.625
-12RH	-12LH	3.511	.529		.750	.688
-14RH	-14LH	4.011	.592		.812	.750
-16RH	-16LH	4.698		.875	.812	
-18RH	-18LH	5.011	.717	1.000	.875	
-20RH	-20LH	5.511	.842	1.125	1.000	
-24RH	-24LH	6.511	.967	1.437	1.125	
-28RH	-28LH	7.166	1.092	1.625	1.437	
-32RH	-32LH	8.229	1.217	1.875	1.625	

MS21259J

4. Swage: Swage shall be in accordance with MIL-DTL-6117.
5. Tolerances: Unless otherwise specified, tolerances: decimals $\pm .010$, angles $\pm 3^\circ$.

NOTES:

* 1. The part or identifying number (PIN) consists of the letters MS, the specification sheet
* number and a dash number taken from table I.



MS21259-6RH Indicates - Terminal, .3125 (5/16)-24 right hand thread.

2. Dimensions are in inches.
- * 3. Remove burrs and sharp edges. (See MIL-DTL-781.)
4. Interpret drawing in accordance with ASME Y14.5M.
5. These terminals are not to be used with turnbuckle bodies (barrels).
6. In the event of a conflict between the text of this document and the references cited herein, the text of this document takes precedence.
7. Unless otherwise specified, issues of reference documents are those in effect at the time of solicitation.
8. Interchangeability relationship: MS21259 parts can universally replace the canceled AN666 parts identified by the same dash number; but the canceled AN666 parts cannot replace the superseding MS21259 parts. MS21259 corrosion resistant steel parts can universally replace the canceled carbon and alloy steel parts identified by the same dash number.
9. Carbon and alloy steel parts are inactive for new design.

CHANGES FROM PREVIOUS ISSUE: The margins of this specification sheet are marked with asterisks to indicate where changes from the previous issue were made. This was done as a convenience only and the Government assumes no liability whatsoever for any inaccuracies in these notations. Bidders and contractors are cautioned to evaluate the requirements of this document based on the entire content irrespective of the marginal notations and relationship to the previous issue.

Custodians:

Army - AR
Navy - AS
Air Force - 99

Preparing activity:

DLA - GS5

(Project 1560-0010)

Reviewers:

Navy - MC
Air Force - 71