

UNB SYMBOLS:
ARMY - AT, PC
NAVY - MC, OS
USAF

REVIEWER SYMBOLS:
ARMY - AV, MI, AR
NAVY - EC, SH
USAF - 11, 99

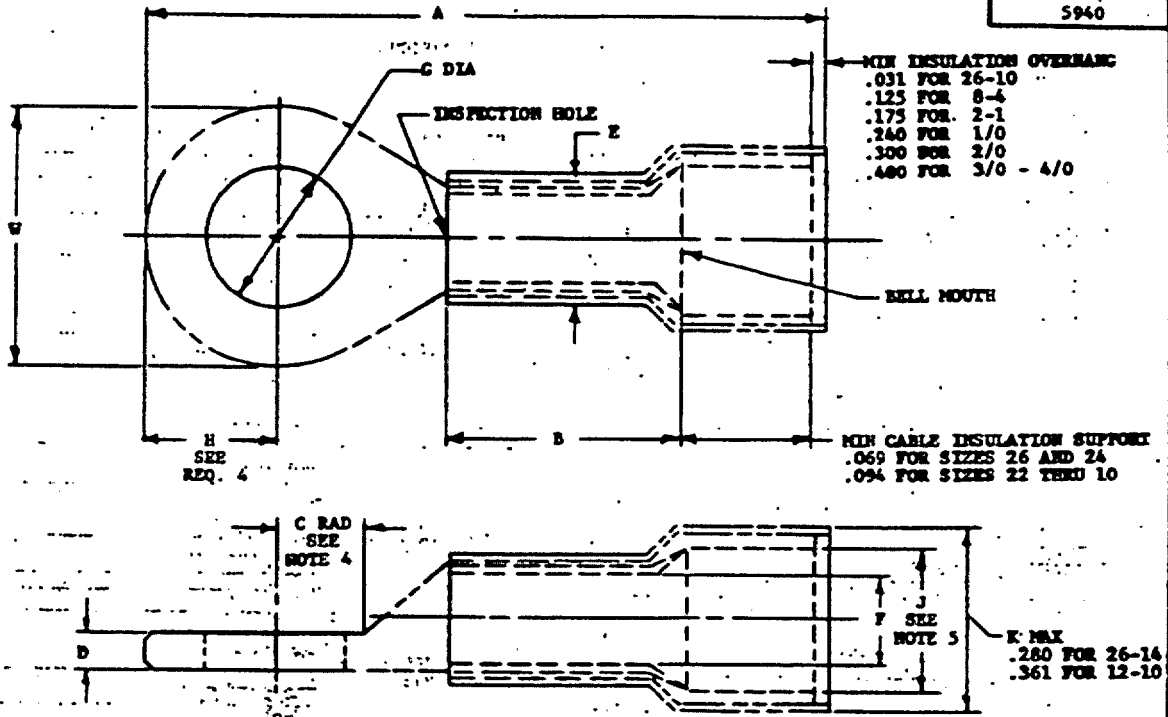


TABLE 1. METRIC CONVERSIONS

| INCH | MM | INCH | MM | INCH | MM | INCH | MM | INCH | MM | INCH | MM |
|------|------|------|------|-------|-------|------|-------|------|-------|-------|-------|
| .022 | 0.56 | .133 | 3.38 | .260 | 6.73 | .410 | 10.19 | .598 | 15.19 | .865 | 21.97 |
| .027 | 0.69 | .138 | 3.51 | .275 | 6.99 | .418 | 10.62 | .605 | 15.37 | .887 | 22.53 |
| .028 | 0.71 | .139 | 3.53 | .276 | 7.01 | .425 | 10.80 | .610 | 15.49 | .890 | 22.61 |
| .029 | 0.74 | .140 | 3.56 | .280 | 7.11 | .430 | 10.90 | .620 | 15.75 | .903 | 22.94 |
| .031 | 0.78 | .142 | 3.61 | .290 | 7.37 | .435 | 11.05 | .622 | 15.80 | .910 | 23.11 |
| .033 | 0.84 | .150 | 3.81 | .296 | 7.52 | .437 | 11.10 | .623 | 15.82 | .913 | 23.19 |
| .035 | 0.89 | .152 | 3.86 | .300 | 7.62 | .438 | 11.13 | .625 | 15.88 | .930 | 23.62 |
| .037 | 0.94 | .153 | 3.89 | .302 | 7.67 | .450 | 11.43 | .630 | 16.00 | .955 | 24.26 |
| .038 | 0.97 | .156 | 3.96 | .305 | 7.75 | .453 | 11.51 | .645 | 16.38 | .956 | 24.28 |
| .043 | 1.09 | .160 | 4.06 | .308 | 7.82 | .458 | 11.63 | .648 | 16.44 | 1.000 | 25.40 |
| .047 | 1.19 | .164 | 4.17 | .310 | 7.87 | .460 | 11.68 | .668 | 16.97 | 1.010 | 25.65 |
| .052 | 1.32 | .168 | 4.27 | .3125 | 7.94 | .473 | 12.01 | .680 | 17.27 | 1.053 | 26.75 |
| .054 | 1.37 | .171 | 4.34 | .315 | 8.00 | .478 | 12.14 | .685 | 17.40 | 1.085 | 27.56 |
| .069 | 1.75 | .175 | 4.46 | .317 | 8.05 | .480 | 12.19 | .690 | 17.53 | 1.090 | 27.69 |
| .070 | 1.78 | .176 | 4.47 | .320 | 8.13 | .500 | 12.70 | .700 | 17.78 | 1.095 | 27.81 |
| .073 | 1.85 | .178 | 4.52 | .323 | 8.20 | .503 | 12.78 | .705 | 17.91 | 1.120 | 28.45 |
| .075 | 1.91 | .186 | 4.72 | .328 | 8.33 | .505 | 12.83 | .711 | 18.06 | 1.148 | 29.16 |
| .081 | 2.06 | .190 | 4.83 | .330 | 8.38 | .510 | 12.95 | .718 | 18.24 | 1.225 | 31.12 |
| .084 | 2.13 | .193 | 4.90 | .338 | 8.59 | .513 | 13.03 | .720 | 18.29 | 1.320 | 33.53 |
| .085 | 2.16 | .198 | 5.03 | .343 | 8.71 | .516 | 13.11 | .729 | 18.52 | 1.322 | 33.58 |
| .086 | 2.18 | .202 | 5.13 | .350 | 8.89 | .520 | 13.21 | .734 | 18.64 | 1.402 | 35.61 |
| .090 | 2.29 | .203 | 5.16 | .355 | 9.02 | .525 | 13.34 | .740 | 18.80 | 1.414 | 35.92 |
| .094 | 2.39 | .208 | 5.28 | .360 | 9.14 | .536 | 13.61 | .750 | 19.05 | 1.466 | 37.24 |
| .095 | 2.41 | .210 | 5.33 | .361 | 9.17 | .540 | 13.72 | .755 | 19.18 | 1.544 | 39.22 |
| .096 | 2.44 | .215 | 5.46 | .365 | 9.27 | .547 | 13.89 | .774 | 19.66 | 1.599 | 40.61 |
| .098 | 2.49 | .222 | 5.64 | .370 | 9.40 | .550 | 13.97 | .783 | 19.89 | 1.762 | 44.75 |
| .109 | 2.77 | .227 | 5.77 | .375 | 9.53 | .557 | 14.15 | .790 | 20.07 | 1.812 | 45.62 |
| .112 | 2.84 | .230 | 5.84 | .380 | 9.65 | .560 | 14.22 | .802 | 20.37 | 1.879 | 47.73 |
| .114 | 2.90 | .232 | 5.89 | .383 | 9.73 | .565 | 14.35 | .804 | 20.42 | 2.069 | 52.55 |
| .120 | 3.05 | .234 | 5.94 | .385 | 9.78 | .570 | 14.48 | .810 | 20.57 | 2.150 | 54.61 |
| .122 | 3.10 | .238 | 6.05 | .386 | 9.80 | .573 | 14.55 | .815 | 20.70 | 2.269 | 57.63 |
| .125 | 3.18 | .240 | 6.10 | .388 | 9.86 | .577 | 14.66 | .840 | 21.34 | 2.370 | 60.20 |
| .126 | 3.20 | .245 | 6.22 | .398 | 10.11 | .580 | 14.73 | .850 | 21.59 | 2.401 | 60.99 |
| .129 | 3.28 | .250 | 6.35 | .400 | 10.16 | .590 | 14.99 | .853 | 21.67 | 2.525 | 64.14 |
| | | .253 | 6.53 | | | | | .855 | 21.72 | 2.750 | 69.85 |
| | | .260 | 6.60 | | | | | .860 | 21.84 | 3.000 | 76.20 |
| | | | | | | | | | | 3.330 | 84.58 |

FOR DESIGN FEATURE PURPOSES, THIS STANDARD TAKES PRECEDENCE OVER ACQUISITION DOCUMENTS REFERENCED HEREIN.
REFERENCED DOCUMENTS SHALL BE OF THE ISSUE IN EFFECT ON DATE OF INVITATIONS FOR BID.

Ⓢ DENOTES CHANGE

| | | | |
|---|---|--|-------------------------------------|
| P.A. NAVY - AS Other Com | INTER- NATIONAL INTEREST SEE NOTE 9 | TITLE TERMINAL, LUG, CLAMP STYLE, COPPER, INSULATED, RING TONGUE, BELL-MOUTHEd, TYPE II, CLASS 1, (FOR 105°C TOTAL CONDUCTOR TEMPERATURE) | MILITARY STANDARD MS25036 |
| ARMY - ER USAF - 85 | | SUPPLEMENT: MS25124 AS DWG 52A3B212 | SHEET 1 OF 3 |
| ACQUISITION SPECIFICATION MIL-T-792B | | | |

APPROVED FOR PUBLIC RELEASE; DISTRIBUTION IS UNLIMITED.

Review user information to correct as of the date of this document.
For future coordination of changes to this document, draft identification
should be based on the information in the current drawing.

This military standard is approved for use by all Departments
& Agencies of the Department of Defense. Solicitation for all use
engineering and design applications and for resubmission and shall
be made from this document.

APPROVED 25 MAY 53 REVISED 28 FEB 74 19 JAN 01 19 FEB 86 8 DEC 86

TABLE II. DIMENSIONS

| DASH NO. | TERMI- NAL SIZE | STUD SIZE | A MAX | R MIN | C MIN RAD | D | | E DIA | F DIA | G DIA | | J MIN DIA | W | | INSU- LATING SLEEVE COVER |
|----------|-----------------------|--------------|----------|----------|-----------------|------|------|----------|----------|----------|------|-----------------|-------|-------|------------------------------------|
| | | | | | | MAX | MIN | | | MAX | MIN | | MAX | MIN | |
| 143 | 26-24 | 2(.086) | .740 | .126 | .133 | .028 | .022 | .215 | .033 | .098 | .090 | .084 | .210 | .133 | YELLOW |
| 144 | | 4(.112) | .755 | | .171 | | | | | .122 | .114 | | .260 | .193 | |
| 145 | | 6(.138) | .855 | | .202 | | | | | .152 | .142 | | .330 | .245 | |
| 146 | | 8(.164) | .855 | | .202 | | | | | .178 | .168 | | | | |
| 147 | | 10(.190) | .865 | | .227 | | | | | .203 | .193 | | | | |
| 149 | 22-18 | 2(.086) | .740 | .156 | .115 | .035 | .027 | .215 | .073 | .098 | .090 | .120 | .230 | .198 | RED |
| 148 | | 4(.112) | .755 | | .122 | | | | | .114 | .260 | | .210 | | |
| 149 | | 6(.138) | .790 | | .125 | | | | | .142 | .260 | | .245 | | |
| 150 | | 8(.164) | .930 | | .202 | | | | | .178 | .168 | | .320 | .305 | |
| 151 | | 10(.190) | .930 | | .234 | | | | | .203 | .193 | | .475 | .450 | |
| 152 | | 1/4(.250) | 1.090 | | .265 | | | | | .275 | .260 | | | | |
| 153 | | 5/16(.3125) | 1.090 | | .296 | | | | | .338 | .323 | | .540 | .520 | |
| 154 | | 3/8(.375) | 1.320 | | .328 | | | | | .400 | .385 | | .720 | .705 | |
| 155 | 1/2(.500) | 1.320 | .453 | .525 | .510 | | | | | | | | | | |
| 156 | 16-14 | 4(.112) | .774 | .156 | .125 | .035 | .029 | .240 | .095 | .122 | .114 | .153 | .260 | .240 | BLUE |
| 157 | | 6(.138) | .815 | | .152 | | | | | .142 | .317 | | .302 | | |
| 158 | | 8(.164) | .910 | | .202 | | | | | .178 | .168 | | .475 | .450 | |
| 159 | | 10(.190) | .955 | | .234 | | | | | .203 | .193 | | | | |
| 160 | | 1/4(.250) | 1.085 | | .265 | | | | | .275 | .260 | | .540 | .520 | |
| 161 | | 5/16(.3125) | 1.085 | | .296 | | | | | .338 | .323 | | .720 | .705 | |
| 162 | | 3/8(.375) | 1.225 | | .328 | | | | | .400 | .385 | | | | |
| 163 | | 1/2(.500) | 1.320 | | .453 | | | | | .525 | .510 | | | | |
| 164 | 12-10 | 6(.138) | 1.120 | .234 | .202 | .043 | .037 | .300 | .139 | .152 | .142 | .210 | .380 | .365 | YELLOW |
| 165 | | 8(.164) | 1.120 | | .234 | | | | | .203 | .193 | | .536 | .516 | |
| 166 | | 10(.190) | 1.120 | | .265 | | | | | .275 | .260 | | .598 | .573 | |
| 167 | | 1/4(.250) | 1.322 | | .296 | | | | | .338 | .323 | | .720 | .705 | |
| 168 | | 5/16(.3125) | 1.322 | | .328 | | | | | .400 | .385 | | | | |
| 169 | 3/8(.375) | 1.414 | .453 | .525 | .510 | | | | | | | | | | |
| 170 | 8 | 10(.190) | 1.402 | .315 | .234 | .084 | .038 | .350 | .186 | .203 | .193 | .257 | .429 | .386 | RED |
| 171 | | 1/4(.250) | 1.468 | | .265 | | | | | .275 | .260 | | .478 | .435 | |
| 172 | | 5/16(.3125) | 1.544 | | .296 | | | | | .338 | .323 | | .590 | .547 | |
| 173 | | 3/8(.375) | 1.544 | | .328 | | | | | .400 | .385 | | | | |
| 174 | 6 | 10(.190) | 1.599 | .375 | .234 | .084 | .043 | .410 | .232 | .203 | .193 | .310 | .503 | .460 | BLUE |
| 175 | | 1/4(.250) | 1.762 | | .265 | | | | | .275 | .260 | | .623 | .580 | |
| 176 | | 5/16(.3125) | 1.762 | | .296 | | | | | .338 | .323 | | | | |
| 177 | 3/8(.375) | 1.762 | .328 | .400 | .385 | | | | | | | | | | |
| 178 | 4 | 1/4(.250) | 1.812 | .437 | .276 | .096 | .047 | .500 | .290 | .275 | .260 | .370 | .570 | .480 | YELLOW |
| 179 | | 5/16(.3125) | 1.879 | | .308 | | | | | .318 | .273 | | .648 | .605 | |
| 180 | | 3/8(.375) | 1.879 | | .328 | | | | | .400 | .385 | | | | |
| 181 | 2 | 1/4(.250) | 2.069 | .505 | .343 | .109 | .054 | .510 | .355 | .275 | .260 | .453 | .711 | .668 | RED |
| 182 | | 3/8(.375) | 2.269 | | .453 | | | | | .400 | .385 | | .804 | .740 | |
| 183 | 1 | 1/4(.250) | 2.150 | .565 | .383 | .125 | .070 | .560 | .388 | .275 | .260 | .500 | .783 | .740 | CLEAR TO WHITE |
| 184 | | 3/8(.375) | 2.370 | | .453 | | | | | .400 | .385 | | .887 | .740 | |
| 185 | 0 | 1/4(.250) | 2.401 | .630 | .418 | .125 | .070 | .685 | .458 | .275 | .260 | .550 | .853 | .810 | BLUE |
| 186 | | 3/8(.375) | 2.525 | | .453 | | | | | .400 | .385 | | .903 | .860 | |
| 187 | | 1/2(.500) | 2.525 | | | | | | | | | | | | |
| 188 | 00 | 5/16(.3125) | 2.750 | .700 | .473 | .129 | .075 | .755 | .520 | .338 | .323 | .610 | .956 | .913 | YELLOW |
| 189 | | 3/8(.375) | 2.750 | | .473 | | | | | .400 | .385 | | | | |
| 190 | 1/2(.500) | 2.750 | | | | | | | | | | | | | |
| 191 | 000 | 3/8(.375) | 3.000 | .718 | .513 | .140 | .085 | .840 | .577 | .400 | .385 | .680 | 1.053 | 1.010 | RED |
| 192 | | 1/2(.500) | 3.000 | | .473 | | | | | .400 | .385 | | | | |
| 193 | 0000 | 3/8(.375) | 3.330 | .734 | .560 | .150 | .095 | 1.000 | .645 | .400 | .385 | .750 | 1.148 | 1.095 | BLUE |
| 194 | | 1/2(.500) | 3.330 | | | | | | | | | | | | |

APPROVED 23 May 53 REVISED 2 FOR CHANGES SEE SHEET 3

| | | | |
|--|--|--|-------------------|
| P.A. NAVY - AS Other Cost | INTER- NATIONAL INTEREST SEE NOTE 9 | TITLE TERMINAL, LUG, CRIMP STYLE, COPPER, INSULATED, RING TONGUE, BELL-MOUTHED, TYPE II, CLASS 1. (FOR 105°C TOTAL CONDUCTOR TEMPERATURE) | MILITARY STANDARD |
| | | | MS25036 |
| ACQUISITION SPECIFICATION ML-T-7928 | SUPERSEDES MS25124 AS DWG 52AB212 | SHEET 2 OF 3 | |

USER SYMBOLS: ARMY - AT, ME; NAVY - MC, OS; USAF -
 REVIEWER SYMBOLS: ARMY - AV, MI, AR; NAVY - EC, SH; USAF - 11, 99
 This military standard is approved for use by all Departments & Agencies of the Department of Defense. Selection for all use requires the design applications and for repeating use shall be made from this document.
 Reviewer information is current as of the date of this document. For future coordination of changes to this document, draft circulation should be based on the information in the current "OBIGS".

