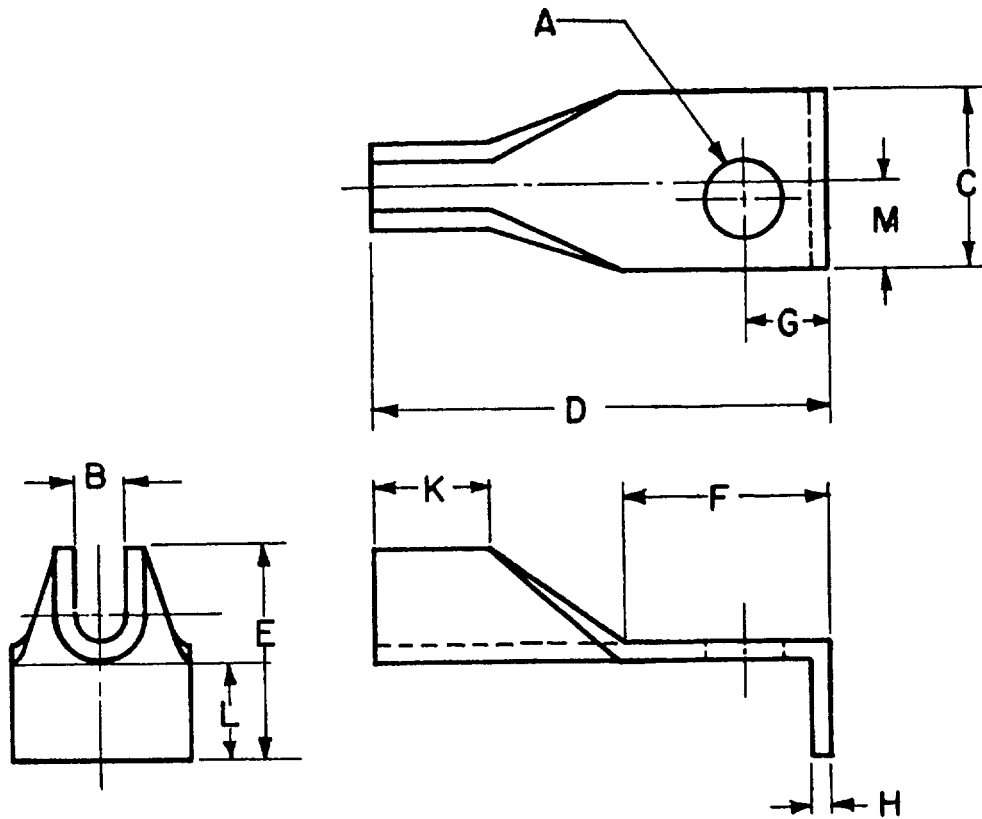


ARMY **MO**
NAVY **WP, YD**
REVIEW **INTEREST**

NOTICE—When Government drawings, specifications, or other data are used for any purpose other than in connection with a definitely related Government procurement operation, the United States Government thereby incurs no responsibility, nor any obligation whatsoever, and the fact that the Government may have formulated, furnished, or in any way supplied the said drawings, specifications, or other data is not to be regarded by implication or otherwise as in any manner licensing the holder or any other person or corporation, or conveying any rights or permission to manufacture, use, or sell any patented invention that may in any way be related thereto.

This military standard is approved by the Department of Defense and is mandatory on all activities. Selection for all new engineering and design applications and for repetitive use shall be made from this document.

FED. SUP CLASS
5940



DASH NO.	WIRE SIZE AWG NOM	STUD SIZE	A HOLE DIA		B	C	D	E	F	G +0.005 -0.000	H ±0.003	K	L	M
			MIN	MAX										
1	10	4	.115	.127	1/8	1/4	21/32	1/4	11/32	.157	.032	1/8	1/16	1/8
2	12	6	.141	.153	3/32	5/16	27/32	3/8	—	.157	.032	3/16	3/16	1/8

MATERIAL: COPPER, ANNEALED—SPECIFICATION QQ-C-576. (C)

FINISH: HOT TIN DIP OR ELECTRODEPOSITED TIN ALL OVER, MINIMUM THICKNESS .0005 INCHES.

- NOTES:**
1. ALL DIMENSIONS IN INCHES. TOLERANCES: FRACTIONAL $\pm 1/64$ UNLESS OTHERWISE SPECIFIED.
 2. REMOVE ALL BURRS.
 3. REFERENCED DOCUMENTS OF ISSUE IN EFFECT ON DATE OF INVITATION FOR BIDS SHALL APPLY.
 4. THE MS PART NUMBER CONSISTS OF THE MS NUMBER PLUS THE DASH NUMBER.

P.A. MU	TITLE TERMINAL LUG, SOLDER TYPE, COPPER STAMPING, ONE HOLE, LOCATING LIP	MILITARY STANDARD
Other Cust SHIPS		MS 35435
Procurement Specification MIL-T-15659	SUPERSEDES:	SHEET OF

APPROVED 8 JULY 66 REVISED (A) 23 JULY 66, (B) 10 FEBRUARY 61, (C) 10 JULY 64