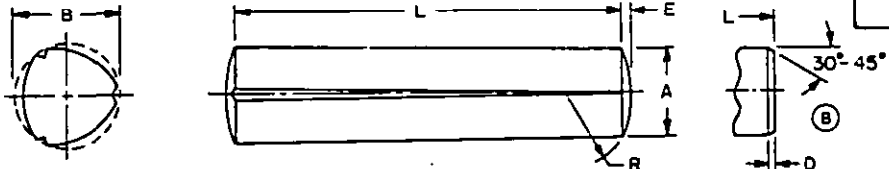


REVIEWER: AV, EA, IS, MI, NS
 USER: AT, CL, MC, ME, MU, WY

This military standard is approved for use by all Departments and Agencies of the Department of Defense. Selection for all new engineering and design applications and for repetitive use shall be made from this document.



FED. SUP CLASS
5315

NOMINAL SIZE			.0469	.0625	.0781	.0938	
A DIAMETER	MAX		.0469	.0625	.0781	.0938	
	MIN		.0459	.0613	.0771	.0928	
D CHAMFER LENGTH*	(B) MIN		----	.016	.016	.016	
E CROWN HEIGHT*	REF		----	.006	.009	.009	
R RADIUS	±.010		----	.078	.094	.125	
RECOMMENDED HOLE SIZE	MAX		.0482	.0640	.0798	.0956	
	MIN		.0469	.0625	.0781	.0938	
SINGLE SHEAR STRENGTH LBS-MIN			150	270	430	620	
L LENGTH	±.010	DASH NO.	B DIA ±.001	DASH NO.	B DIA ±.001	DASH NO.	B DIA ±.001
.188	(B)	1	.050	6	.066	11	.082
.250		2	.050	7	.066	12	.082
.375		3	.050	8	.066	13	.082
.500		4	.050	9	.066	14	.082
.625		5	.050	10	.066	15	.082
.750							
1.000							

NOMINAL SIZE			.125	.1562	.1875	.250	
A DIAMETER	MAX		.1250	.1562	.1875	.2500	
	MIN		.1230	.1542	.1855	.2480	
D CHAMFER LENGTH*	(B) MIN		.016	.031	.031	.031	
E CROWN HEIGHT*	REF		.013	.017	.018	.025	
R RADIUS	±.010		.156	.188	.250	.312	
RECOMMENDED HOLE SIZE	MAX		.1271	.1587	.1903	.2534	
	MIN		.1250	.1562	.1875	.2500	
SINGLE SHEAR STRENGTH LBS-MIN			1100	1720	2480	4420	
L LENGTH	±.010	DASH NO.	B DIA ±.002	DASH NO.	B DIA ±.002	DASH NO.	B DIA ±.002
.500	(B)	21	.132	27	.164	33	.195
.625		22	.132	28	.164	34	.195
.750		23	.132	29	.164	35	.195
1.000		24	.131	30	.163	36	.194
1.250		25	.130	31	.162	37	.194
1.500		26	.130	32	.162	38	.194
1.750						39	.193
2.000						40	.193
2.250							
2.500							
2.750							

- NOTES:
- (B) MATERIAL: Corrosion-resisting steel, 300 series, in accordance with Fed. Std. No. 66. The minimum ultimate shear strength shall be 90,000 PSI.
 - PROTECTIVE COATING: Passivated in accordance with QQ-P-35.
 - DIMENSIONS: All dimensions are in inches, unless otherwise specified.
 - APPLICATION: Grooved pins are locked securely in place by elastic deformation, eliminating the need for tapping or reaming of tapered or sized holes.
 - PART NUMBER: The MS part number consists of the MS number, plus the dash number.
Example: MS35672-1.
 - Diameter "B" is the expanded diameter as measured with a ring gage.
 - Ends may be crowned or chamfered or may be square with .01 to .02 radius on the edges.
 - Referenced documents shall be of the issue in effect on date of invitations for bid.
 - For design feature purposes, this standard takes precedence over procurement documents referenced herein.

P.A. VC Other Code AS 82	TITLE PIN, GROOVED, HEADLESS-LONGITUDINAL TAPER GROOVE, CORROSION-RESISTING STEEL	MILITARY STANDARD MS35672
PROCUREMENT SPECIFICATION MIL-P-20700	SUPERSEDES: AEG12 in part	SHEET 1 OF 1

DD FORM 672-1 (COORDINATED) PREVIOUS EDITIONS OF THIS FORM ARE OBSOLETE.

APPROVED 11 JAN 1956 REVISED (A) 17 MAR 1965 (B) 22 AUG 1975