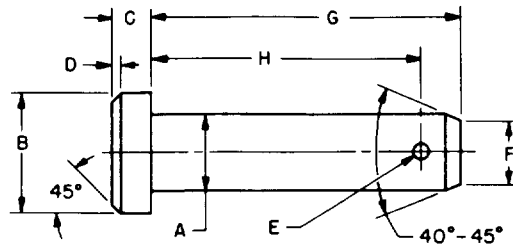


FED. SUP CLASS
5315



REVIEWER: EL, IS, ME, MI, NSA, BS
(SERIES, AT, MC, OS, YD)

DASH No.		NOM SIZE	A DIA		B DIA ±.010	C ±.010	D ±.010	E HOLE DIA		F DIA		G +.020 -.000	H +.020 -.000	MINIMUM STRENGTH IN DOUBLE SHEAR LBS *
CAD	ZINC		MAX	MIN				MAX	MIN	MAX	MIN			
1	11	3/16	.186	.181	.312	.062	.016	.088	.073	.152	.147	.578	.484	1800
2	12	1/4	.248	.243	.375	.094	.031	.088	.073	.214	.209	.766	.672	3200
3	13	5/16	.311	.306	.438	.094	.031	.119	.104	.265	.259	.938	.812	5000
4	14	3/8	.373	.368	.500	.125	.031	.119	.104	.327	.321	1.062	.938	7100
5	15	7/16	.436	.431	.562	.156	.047	.119	.104	.390	.384	1.188	1.062	9900
6	16	1/2	.496	.491	.625	.156	.047	.151	.136	.449	.443	1.359	1.203	12900
7	17	5/8	.621	.616	.812	.203	.062	.151	.136	.564	.556	1.609	1.453	20200
8	18	3/4	.746	.741	.938	.250	.078	.182	.167	.678	.668	1.906	1.719	29100
9	19	7/8	.871	.866	1.031	.312	.094	.182	.167	.803	.793	2.156	1.969	39700
10	20	1	.996	.991	1.188	.344	.109	.182	.167	.928	.918	2.406	2.210	51800

NOTES:

- MATERIAL:** Carbon steel, type 1, in accordance with procurement specification.
- HEAT TREATMENT:** Cyanide hardened in accordance with procurement specification.
- PROTECTIVE COATING:** Cadmium plated or zinc coated in accordance with procurement specification.
- DIMENSIONS:** All dimensions are in inches, unless otherwise specified.
- PART NUMBER:** The MS part number consists of the MS number, plus the dash number.
Example: MS45*10-J.
- Using 33,000 PSI as min yield strength in shear, this figure is the allowable load. (This shear load is intended as a guide in selecting the proper pin.)
- Referenced documents shall be of the issue in effect on date of invitations for bid.
- For design feature purposes, this standard takes precedence over procurement documents referenced herein.
- Dash numbers 31 thru 40 are cancelled, effective 21 MAR 1969, and superseded by dash numbers 1 thru 10 for cadmium plated pins and dash numbers 11 thru 20 for zinc plated pins. Use superseded pins until supply is depleted. Use only the new dash numbers for new design and engineering.

This military standard is mandatory for use by all Departments and Agencies of the Department of Defense. Selection for all new engineering and design applications and for repetitive use shall be made from this document.

ENTIRE STANDARD REVISED

APPROVED 26 DEC 56 REVISED (A) 17 MAY 60 (B) 21 MAR 1969

P.A. WC Other Cust SH 82	TITLE PIN, STRAIGHT, HEADED (CLEVIS PIN) - STEEL, CADMIUM OR ZINC PLATED	MILITARY STANDARD MS35810
PROCUREMENT SPECIFICATION MIL-P-27235	SUPERSEDES BFFX1 and BFFX2	SHEET 1 OF 1

DD FORM 672-1 (Coordinated)

PREVIOUS EDITIONS OF THIS FORM ARE OBSOLETE

☆ U. S. GOVERNMENT PRINTING OFFICE: 1969-341-518/A-5576