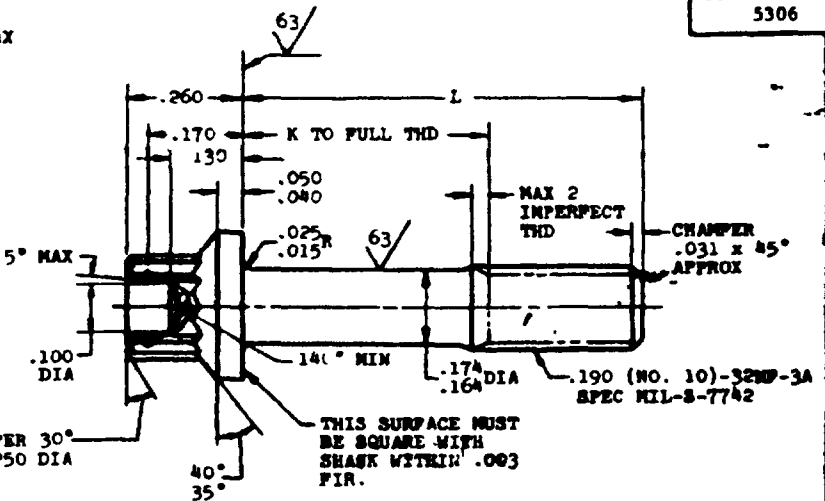
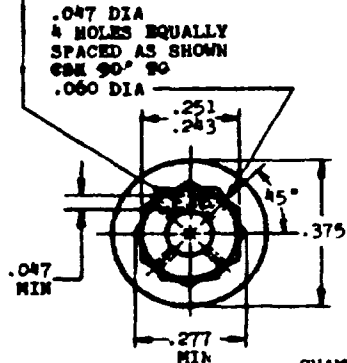
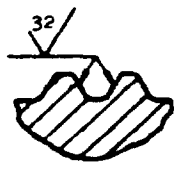


MATERIAL IDENTIFICATION
RAISED OR DEPRESSED .010 MAX

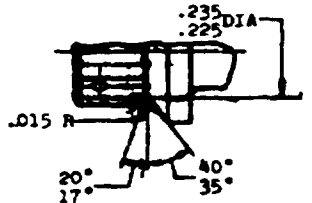


User activities:

Review activities:
HI
IS



SECTION THRU THREAD PROFILE



OPTIONAL SHAPE OF HEAD

Ⓐ INACTIVE FOR DESIGN AFTER 28 Feb 1984
FOR PARTS WITH MIL-S-8879 SCREW THREADS SEE MS9923

PART NO.	L	K +.000 -.060	APPROX WEIGHT LBS/100	PART NO.	L	K +.000 -.060	APPROX WEIGHT LBS/100	PART NO.	L	K +.000 -.060	APPROX WEIGHT LBS/100
MS9088-05	.438	I/	.95	MS9088-23	1.562	.938	1.67				
MS9088-06	.500	I/	.99	MS9088-24	1.625	1.000	1.71				
MS9088-07	.562	I/	1.03								
MS9088-08	.625	I/	1.07	MS9088-25	1.638	1.062	1.75				
MS9088-09	.638	I/	1.11	MS9088-26	1.750	1.125	1.79				
MS9088-10	.750	I75	1.15	MS9088-27	1.875	1.250	1.37				
MS9088-11	.812	.188	1.19	MS9088-28	2.000	1.375	1.95				
MS9088-12	.875	.250	1.23	MS9088-29	2.125	1.500	2.03				
MS9088-13	.938	.312	1.27	MS9088-30	2.250	1.625	2.11				
MS9088-14	1.000	.375	1.31	MS9088-31	2.375	1.750	2.19				
MS9088-15	1.062	.438	1.35	MS9088-32	2.500	1.875	2.27				
MS9088-16	1.125	.500	1.39	MS9088-33	2.625	2.000	2.35				
MS9088-17	1.188	.562	1.43	MS9088-34	2.750	2.125	2.43				
MS9088-18	1.250	.625	1.47	MS9088-35	2.875	2.250	2.51				
MS9088-19	1.312	.688	1.51	MS9088-36	3.000	2.375	2.59				
MS9088-20	1.375	.750	1.55								
MS9088-21	1.438	.812	1.59								
MS9088-22	1.500	.875	1.63								

1/ THREAD TO HEAD MAXIMUM TWO IMPERFECT THREADS
NOTES

- SHANK SHALL BE STRAIGHT WITHIN .003 FIR P/P INCH OF BOLT LENGTH
- THE CONCENTRICITY OF THREAD PD IN RELATION TO THE SHANK SHALL BE WITHIN .006 FIR
- THE CONCENTRICITY OF THE SHANK IN RELATION TO THE WASHER FACE DIAMETER AND 12 POINT OD SHALL BE WITHIN .011 FIR
- MATERIAL STEEL AMS 6322
- HARDNESS ROCKWELL C26-32
- FINISH CADMIUM PLATE AMS 2400 DIMENSIONS SPECIFIED ARE AFTER PLATING
- SURFACE ROUGHNESS AS 291
- MANUFACTURING SPECIFICATION AMS 7452 PARTS SUBJECT TO MAGNETIC PARTICLE INSPECTION PER AMS 2640
- BREAK SHARP EDGES .003-.015 UNLESS OTHERWISE SPECIFIED
- DIMENSIONS IN INCHES UNLESS OTHERWISE SPECIFIED
- TOLERANCES, LINEAR DIMENSIONS + .010, ANGULAR DIMENSIONS +5

DO NOT USE UNASSIGNED PART NUMBERS

Ⓐ REVISED AND REDRAWN

THIS STANDARD WAS DEVELOPED COOPERATIVELY WITH THE ENGINE AND PROPELLER UTILITY PARTS COMMITTEE OF THE SAE.

P.A. OTHER CUST	11 AS	MILITARY STANDARD	MS9088
MEASUREMENT SPECIFICATION NOTE			

This military standard is approved for use by all Departments and Agencies of the Department of Defense. Selection for all new engineering and design applications and for repetitive use shall be made from this document, where applicable.

APPROVED 15 APR 84 REVISED 28 FEB 84