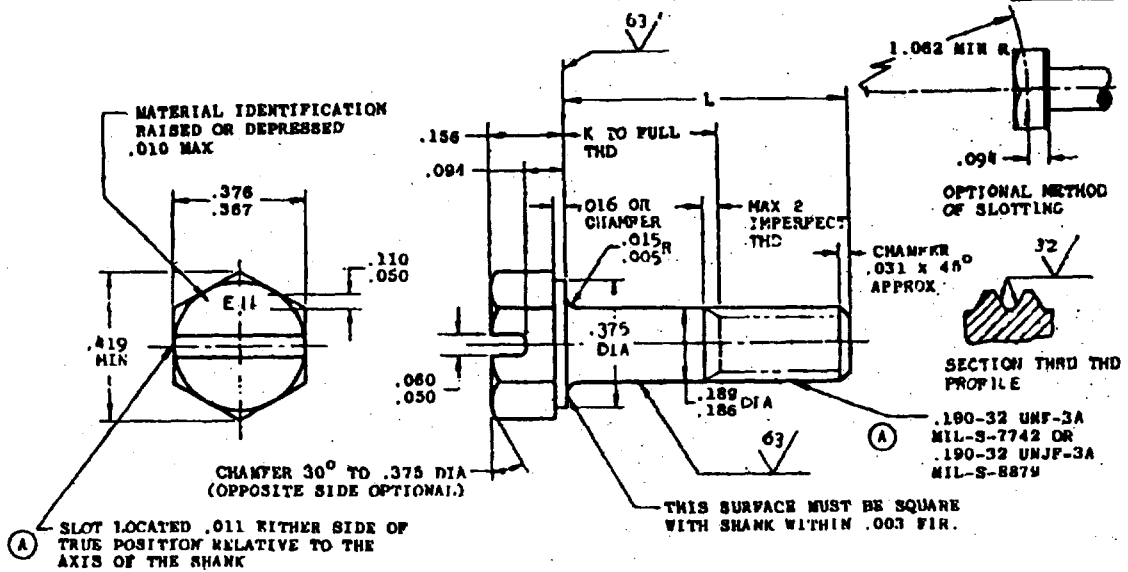


User activities:

Review activities:

DIA-15  
HT



PART NO.	L	K +.000 -.060	APPROX WEIGHT LBS PER 100
MS9122-02	.438	1/	.90
MS9122-03	.500	1/	1.03
*MS9122-04	.562	1/	1.16
MS9122-05	.625	1/	1.28
MS9122-06	.688	1/	1.41
MS9122-07	.750	.125	1.54
*MS9122-08	.812	.188	1.67
MS9122-09	.875	.250	1.79
MS9122-10	.938	.312	1.93
MS9122-11	1.000	.375	2.05
*MS9122-13	1.125	.500	2.31
MS9122-15	1.250	.625	2.57
MS9122-17	1.375	.750	2.82
*MS9122-19	1.500	.875	3.08

(A) INACTIVE FOR DESIGN  
AFTER 28 Feb 1984  
NO SUPERSEDING STANDARD

1/ THREAD TO HEAD. MAXIMUM TWO IMPERFECT THREADS.  
\*PREFERRED LENGTHS

NOTES:

1. SHANK SHALL BE STRAIGHT WITHIN .004 FIR. PER INCH OF SCREW LENGTH.
2. THE CONCENTRICITY OF THREAD PD IN RELATION TO THE SHANK SHALL BE WITHIN .006 FIR
3. THE CONCENTRICITY OF THE SHANK IN RELATION TO THE WASHER FACE DIA AND HEXAGON SHALL BE WITHIN .011 FIR.
4. MATERIAL: STEEL AMS 6322.
5. HARDNESS: ROCKWELL C26-32
6. FINISH: CADMIUM PLATE AMS 2400. DIMENSIONS SPECIFIED ARE AFTER PLATING
7. SURFACE TEXTURE: ANSI B46.1-1962. 250 MICRORINCHES UNLESS OTHERWISE SPECIFIED.
8. MANUFACTURING SPECIFICATION: AMS 7452. PARTS SUBJECT TO MAGNETIC PARTICLE INSPECTION PER AMS 2640.
9. BREAK SHARP EDGES .003-.015 UNLESS OTHERWISE SPECIFIED
10. DIMENSIONS IN INCHES. UNLESS OTHERWISE SPECIFIED
11. TOLERANCES: LINEAR DIMENSIONS +.010, ANGULAR DIMENSIONS ±5°
12. TRUE POSITION TOLERANCE AND RELATED DATUM ARE AT 19IC

DO NOT USE UNASSIGNED PART NUMBERS.

(A) REVISED AND REDRAWN

THIS STANDARD WAS DEVELOPED COOPERATIVELY WITH THE ENGINE AND PROPELLER UTILITY PARTS COMMITTEE OF THE SAE.

This military standard is approved for use by all Departments and Agencies of the Department of Defense. Selection for all new engineering and design applications and for repetitive use shall be made from this document, when applicable.

P.A.	11	TITLE	<b>MILITARY STANDARD</b> <b>MS9122</b>
OTHER CUST:	AS 11	SCREW, MACHINE, SLOTTED HEX HEAD, .190-32	
PROCUREMENT SPECIFICATION	NONE	SUPERSEDES:	SHEET 1 OF 1

APPROVED 9 Jun 59 REVISED (A) 28 Feb 84