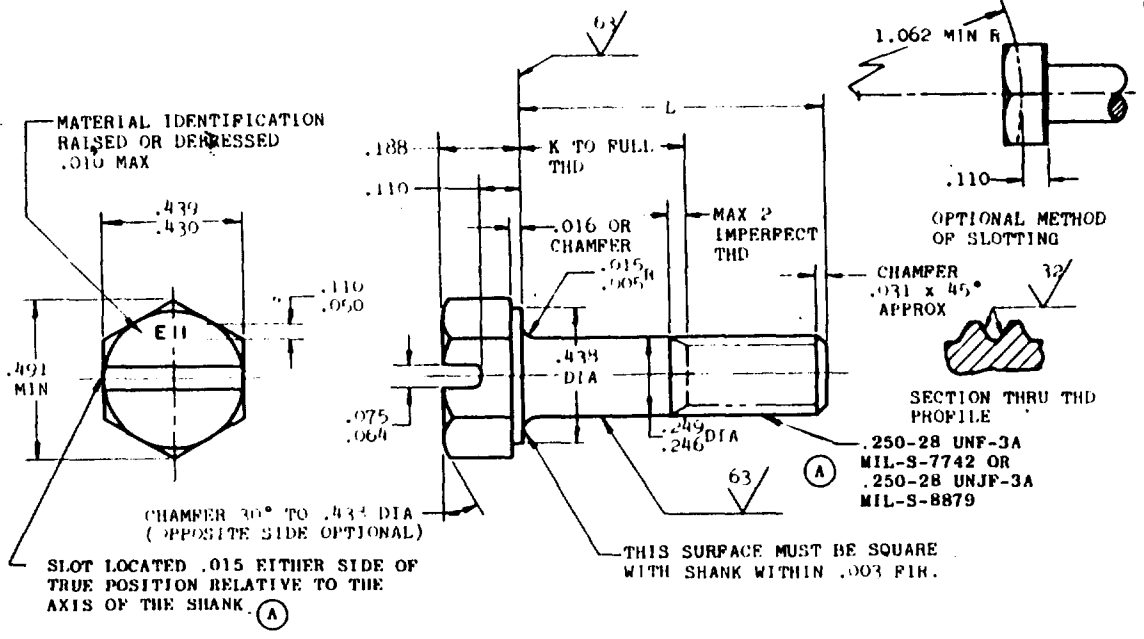


User activities:
Review activities:

DLA-15
MI



PART NO.	L	K +.000 -.060	APPROX WEIGHT LBS PER 100
MS9123-02	.500	1/	1.50
MS9123-03	.562	1/	1.68
*MS9123-04	.625	1/	1.87
MS9123-05	.688	1/	2.06
MS9123-06	.750	1/	2.25
MS9123-07	.812	1/	2.44
*MS9123-08	.875	.125	2.62
MS9123-09	.938	.188	2.81
MS9123-10	1.000	.250	3.00
MS9123-12	1.125	.375	3.37
MS9123-14	1.250	.500	3.75
MS9123-16	1.375	.625	4.12
MS9123-17	1.500	.750	4.50

INACTIVE FOR DESIGN
AFTER 28 Feb 1984
NO SUPERSEDING STANDARD

1/ THREAD TO HEAD. MAXIMUM TWO IMPERFECT THREADS.
*PREFERRED LENGTHS

NOTES:

- SHANK SHALL BE STRAIGHT WITHIN .003 FIR. PER INCH OF SCREW LENGTH.
- THE CONCENTRICITY OF THREAD PD IN RELATION TO THE SHANK SHALL BE WITHIN .006 FIR.
- THE CONCENTRICITY OF THE SHANK IN RELATION TO THE WASHER FACE DIA. AND HEXAGON SHALL BE WITHIN .013 FIR.
- MATERIAL: STEEL AMS 6322.
- HARDNESS: ROCKWELL C26-32.
- FINISH: CADMIUM PLATE AMS 2400. DIMENSIONS SPECIFIED ARE AFTER PLATING.
- SURFACE TEXTURE: ANSI B46.1-1962. 250 MICRONS UNLESS OTHERWISE SPECIFIED.
- MANUFACTURING SPECIFICATION: AMS 7452. PARTS SUBJECT TO MAGNETIC PARTICLE INSPECTION PER AMS 2640.
- BREAK SHARP EDGES .003-.015 UNLESS OTHERWISE SPECIFIED.
- DIMENSIONS IN INCHES. UNLESS OTHERWISE SPECIFIED.
- TRUE POSITION TOLERANCE AND RELATED DATUM ARE AT MMC.
- TOLERANCES: LINEAR DIMENSIONS +.010, ANGULAR DIMENSIONS +5°

DO NOT USE UNASSIGNED PART NUMBERS

REVISED AND REDRAWN.

THIS STANDARD WAS DEVELOPED COOPERATIVELY WITH THE ENGINE AND PROPELLER UTILITY PARTS COMMITTEE OF THE SAE.

P.A.	11	TITLE	SCREW, MACHINE, SLOTTED HEX HEAD, 250-28	MILITARY STANDARD
OTHER CUST:	AS 11			MS9123
PROCUREMENT SPECIFICATION	NONE	SUPERSEDES:		SHEET 1 OF 1

This military standard is approved for use by all Departments and Agencies of the Department of Defense. Selection for all new engineering and design applications and for repetitive use shall be made from this document, when applicable.

APPROVED 9 Jun 59 REVISED 28 Feb 84