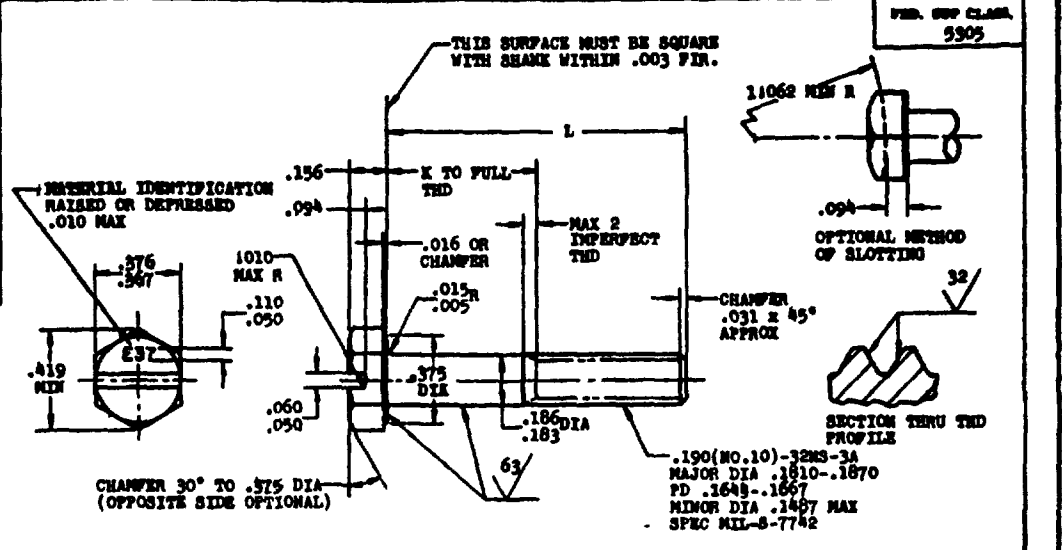


NOTES: When Government drawings, specifications or other data are used for any purpose other than in connection with a definitely related Government procurement operation, the United States Government thereby incurs no responsibility, and the fact that the Government may have furnished, furnished, or in any way supplied the said drawings, specifications, or other data is not to be regarded as an endorsement or approval of the quality, or of the design covered herein in engineering, design, and procurement. THIS STANDARD SHALL BECOME EFFECTIVE NOT LATER THAN 90 DAYS AFTER THE LATEST DATE OF APPROVAL SPEC.

# MS9316 (ASG)



PART NO.	L	K +.000 -.060	APPROX WEIGHT LB PER 100
MS9316-02	.438	(a)	.90
MS9316-03	.500	(a)	1.03
*MS9316-04	.562	(a)	1.16
MS9316-05	.625	(a)	1.28
MS9316-06	.688	(a)	1.41
MS9316-07	.750	.125	1.54
*MS9316-08	.812	.188	1.67
MS9316-09	.875	.250	1.79
MS9316-10	.938	.312	1.93
MS9316-11	1.000	.375	2.05
*MS9316-13	1.125	.500	2.31
MS9316-15	1.250	.625	2.57
MS9316-17	1.375	.750	2.82
*MS9316-19	1.500	.875	3.08

(a) THREAD-TO HEAD. MAXIMUM TWO IMPERFECT THREADS.

\*PREFERRED LENGTHS

NOTE: (1) SHANK SHALL BE STRAIGHT WITHIN .004 FIR. PER INCH OF SCREW LENGTH.  
 (2) THE CONCENTRICITY OF THREAD PD IN RELATION TO THE SHANK SHALL BE WITHIN .006 FIR.  
 (3) THE CONCENTRICITY OF THE SHANK IN RELATION TO THE WASHER FACE DIA AND HEXAGON SHALL BE WITHIN .011 FIR.

MATERIAL: STEEL AMS 6304

HARDNESS: ROCKWELL C32-36

FINISH: DIFFUSED NICKEL-CADMIUM PLATE AMS 2416. CONTACT POINTS PERMISSIBLE. PD MAY BE MODIFIED .0012 MAX BEFORE PLATING. DIMENSIONS SPECIFIED ARE AFTER PLATING.

SURFACE ROUGHNESS: AS 291. 250 MICROINCHES UNLESS OTHERWISE SPECIFIED.

MANUFACTURING SPECIFICATION: AMS 7454. PARTS SUBJECT TO MAGNETIC PARTICLE INSPECTION PER AMS 2640.

BREAK SHARP EDGES .003-.015, UNLESS OTHERWISE SPECIFIED.

DIMENSIONS IN INCHES. UNLESS OTHERWISE SPECIFIED: TOLERANCES; LINEAR DIMENSIONS ±.010, ANGULAR DIMENSIONS ±5°.

DO NOT USE UNASSIGNED PART NUMBERS.

THIS STANDARD WAS DEVELOPED COOPERATIVELY WITH THE ENGINE AND PROPELLER UTILITY PARTS COMMITTEE OF THE SAE. THIS DOCUMENT HAS BEEN PROLOGATED BY THE DEPARTMENT OF DEFENSE AS THE MILITARY STANDARD TO LIMIT THE SELECTION OF THE ITEM, PRODUCT, OR DESIGN COVERED HEREIN IN ENGINEERING, DESIGN, AND PROCUREMENT. THIS STANDARD SHALL BECOME EFFECTIVE NOT LATER THAN 90 DAYS AFTER THE LATEST DATE OF APPROVAL SPEC.

CUSTODIAN Navy - Map Air Force	OTHER INT. A - G - H -	<b>MILITARY STANDARD</b> SCREW, MACHINE - STEEL, SLOTTED HEXAGON HEAD, .190-32, NI-CAD PLATE	<b>MS9316 (ASG)</b>
	PROCEDURE SPECIFICATION		

APPROVED 16 MAY 60 REVISED